

ROCHFORD CRIME AND DISORDER REDUCTION PARTNERSHIP

What is it?

This multi-agency Partnership has the responsibility for the production and delivery of the Crime and Disorder Reduction Strategy and its associated action plans. The Group also collectively looks at Crime and Disorder issues across the District and various actions by partner agencies. The Partnership also administers and monitors the funding stream directed to it via the Home Office.

What are the Terms of Reference?

- Joined up thinking is the key to a successful partnership which must be reflected in a jointly produced and adopted Strategy
- To secure multi-agency agreements on delivery of priorities for strategic primary objectives and the means of resourcing them
- To ensure that objectives are specific, measurable, achievable, realistic and timely
- To establish evidence based focussed outcomes and manage and monitor achievement of them
- To continually review service delivery by the Partnership, deployment of initiatives, response to consultation and demonstrate improvement to services
- To conduct audits of local crime and disorder problems and to identify and monitor their extent and advise on further strategic responses to prevent and reduce incidences
- To promote a better understanding of the scale, impact and extent of crime and disorder in the District
- To secure consistency in policies and services across and within Partnership agencies
- To develop robust feedback reporting and consultation mechanisms to ensure that the preparation and delivery of strategic plans are responsive to local needs.
- To secure clarity of lines of accountability and responsibility for delivery of strategic plans
- To oversee and monitor the work of the strategic Partnership Sub Groups
- To set up new Sub Groups if and when required.

Who Attends?

The Partnership consists of the statutory partners of Rochford District Council, Essex Police, Essex County Council, National Probation Service – Essex, Castle Point and Rochford Primary Care Trust, Essex Police Authority and Essex Fire and Rescue Service. These Partnership agencies are charged with leading on crime reduction under the provision of the Crime and Disorder Act 1998.

A wide range of other public, private and voluntary agencies attend, including representatives from Parishes, the business community, RRAVS, British Transport Police, etc.

Is it statutory/non-statutory?

The Partnership operates within a statutory framework and key partners are defined in legislation.

The Partnership works within a wider context locally. See the attached diagram and explanatory text.

What is our Contribution?

The District Council's contribution is significant in terms of member and officer input. We provide administrative support and effectively act as "banker" for the Home Office Funding, which is allocated to the Partnership on an annual basis e.g. £70,000 per year.

In addition, the District Council itself has its own Community Safety Budget which it uses to finance specific projects. As from 2006/2007, the Home Office funding will be allocated via Local Area Agreements through the County rather than direct to the Partnership.

How Often does the Partnership meet?

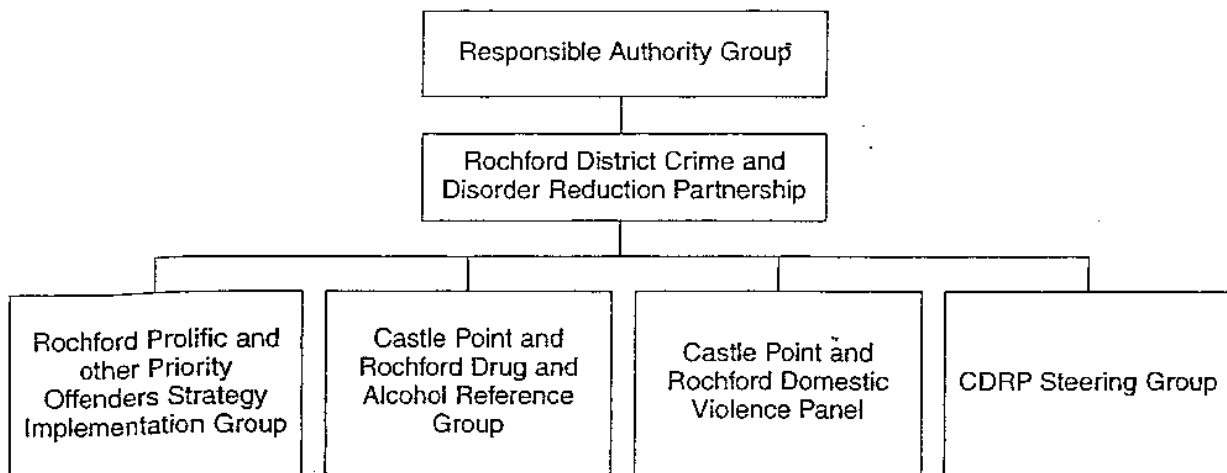
The main partnership meets approximately 6 times per year.

Outputs to Date?

The Partnership has now produced its third Crime and Disorder Reduction Strategy for the District. It also administers the Home Office funding and through the strategy is responsible for the targets set and agreed by the Home Office.

It remains the case that Rochford remains one of the lowest crime areas in the country although specific issues continue to arise around youth nuisance, neighbour disputes and fear of crime.

THE CRIME AND DISORDER STRUCTURE IN ROCHFORD



Other Strategic Partnerships with links to CDRP

The Local Strategic Partnership

The Essex Drug and Alcohol Action Team

The Children and Young Persons Strategic Partnership

Responsible Authority Group (RAG) ■ ■ ■

A joint strategic group that covers Rochford District and the Borough of Castle Point. Representation is at executive level from each Responsible Authority. The group is chaired on an alternating basis by the Chief Executive of each local authority and the Rayleigh Police Divisional Commander. The Crime and Disorder Reduction Partnerships for both districts work on actions and issues within each area under the overall strategic guidance provided by the RAG, which monitors delivery of the respective Strategies and gives advice and guidance as and when necessary. The RAG also has responsibility for approval of the Home Office spending allocations.

Rochford District Crime and Disorder Reduction Partnership (CDRP) ■ ■ ■

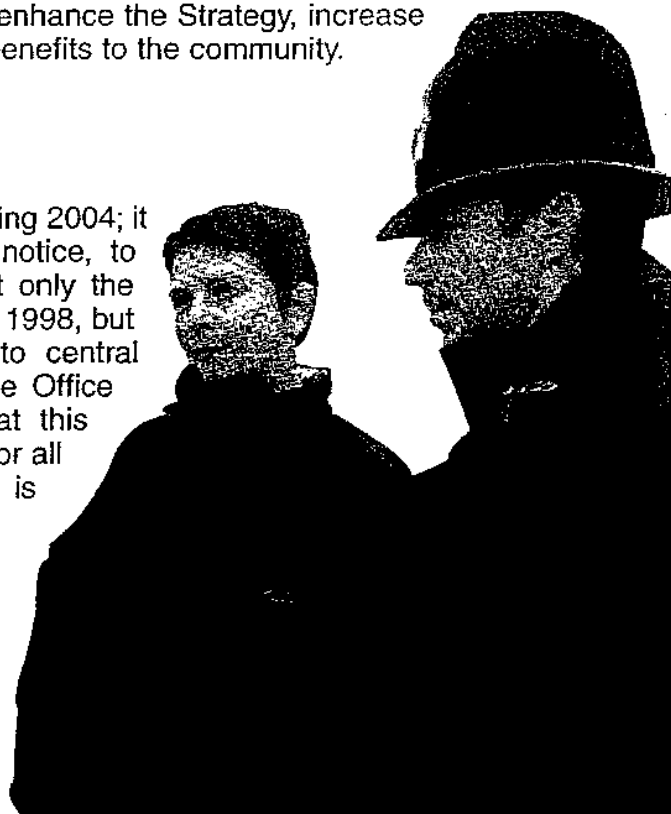
The CDRP is the group that collectively delivers the Strategy, assisted by Home Office funding. It comprises of representatives from each of the statutory agencies, namely:

- Castle Point and Rochford Primary Care Trust
- Essex County Council
- Essex County Fire and Rescue Service
- Essex Police
- Essex Police Authority
- National Probation Service – Essex Area
- Rochford District Council

together with members from non-statutory agencies and the voluntary sector. In addition to progressing the published programme of work the CDRP constantly considers new ideas and initiatives that will enhance the Strategy, increase the likelihood of success and bring greater benefits to the community.

CDRP Steering Group ■ ■ ■

This is a sub-group of the CDRP, formed during 2004; it convenes more frequently, often at short notice, to ensure that the CDRP is able to meet not only the requirements of the Crime and Disorder Act, 1998, but also an increasing variety of obligations to central government, particularly in respect of Home Office funding. However, it should be noted that this Steering Group is responsible to the CDRP for all its work. Each of the statutory agencies is represented on the group.



Rochford Prolific & Other Priority Offenders Strategy Implementation Group

The government has tasked all CDRPs with progressing a national strategy to reduce crime by targeting prolific offenders. This has necessitated the formation of a group from both the CDRP and criminal justice agencies to ensure that the three strands of the Strategy – Catch and Convict, Prevent and Deter and Rehabilitate and Resettle – are progressed against timescales set by central government.

Castle Point and Rochford Drug and Alcohol Reference Group (DARG)

Comprising crime and disorder, health and criminal justice professionals, along with local authority elected Members and representatives from the voluntary sector, this group addresses a wide variety of drugs and alcohol issues on behalf of the CDRP, under the auspices of the Essex Drug and Alcohol Action Team (DAAT). The DARG is instrumental in delivering activities to achieve the drug and alcohol related objectives within the Strategy.

Castle Point and Rochford Domestic Violence Panel

This group, whose membership includes representatives from the police, social services, health, local authority community safety team and the voluntary sector, has lead responsibility for delivering the programme of work under each CDRP's domestic violence primary objective.

