

LIBERATING POTENTIAL: **FULFILLING LIVES**

THE ESSEX STRATEGY 2008-18

2008 EDITION

Contents

1. Introduction by Cllr Pam Challis, Chair of the Essex Partnership Forum
2. Background
3. What the Partnership will do for:
 - Our people
 - Our communities
 - Our economy
 - Our world
4. How the Partnership will do these things

1. Introduction

Cllr Pam Challis, Castle Point Borough Council, Chair of the Essex Partnership Forum

I take great delight in introducing the Essex Strategy 2008-18. It sets out the key goals for improving quality of life in the County and is the work of the Essex Partnership – bringing together the public, private and voluntary sectors.

Improving quality of life in Essex depends on people as much as institutions. Our ambition is to work with our citizens and communities to make the changes that will truly enable our people and communities to liberate their potential. The Essex Strategy is an agenda for change. It recognises that:

People want to be safe and healthy

- These are basic needs. We want our citizens to live healthy lives, free from the fear of crime. **Our ambition is to make Essex the safest place to live in England.**

People want to belong to supportive communities

- People have a right to decent housing, services, infrastructure, and public transport. **Our ambition is to support local people and community groups to shape the places in which they can fulfil their potential.**

People want to achieve in education, work and leisure

- We share the ambition of our people. We want all our citizens to maximise their potential – because it is a good in itself and also because for Essex to prosper in a global economy every one of our citizens must have the

chance to develop their talents to the full. **Our ambition is to strengthen the competitiveness of the Essex economy so that we benefit from, rather than fall victim to the effects of globalisation.**

People want to protect and enhance our natural resources for posterity

- We are fortunate in Essex to benefit from beautiful countryside and coastline. **Our duty is to preserve these precious resources so that we can pass them on to our children and grandchildren.**

The vision of the Essex Partnership is:

"To support Essex people to liberate their potential and enjoy the best quality of life in England"

Essex is a very diverse county. The needs and interests of Saffron Walden differ in significant ways from those of Clacton, Brentwood or Canvey Island. As a borough councillor, I welcome the fact that the Essex Strategy recognises and celebrates these local differences.

Levels of need also vary dramatically - for example, life expectancy differs by nearly twenty years across different parts of the County. The Essex Strategy identifies localities or social groups with high needs and will in due course lead to stretching targets for such places and people in delivery plans like our Essex Local Area Agreement.

The point of the Essex Strategy is to steer partnership action across the geographical tiers. It is in this Strategy that the County Council, District Councils, Primary Care Trusts, the Essex Police, the Essex Fire and Rescue Service, the Learning and Skills Council and other countywide bodies sign up to a complex and varied pattern of priorities that they share with local strategic partnerships at the district level.

Finally, I call on all organisations in Essex to play a full and imaginative part in turning these goals into realities. This is a unique and exciting opportunity to really work together with our citizens to make Essex the best place to live in England. Let's make it happen.

Pam Challis

2. Background

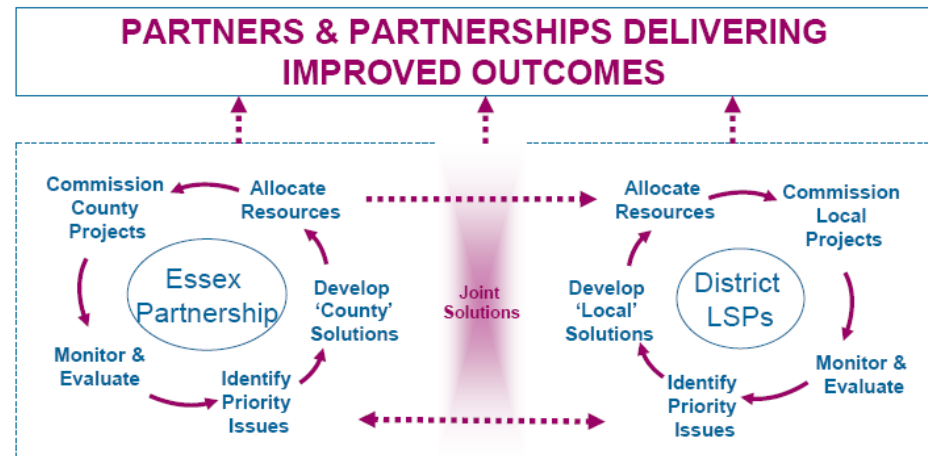
The Essex Partnership

The Essex Partnership, the Local Strategic Partnership for Essex, has representatives from the public, private, voluntary and community sectors. It directs and oversees progress on the Essex Strategy and Essex Local Area Agreement, new initiatives and the effective delivery of services.

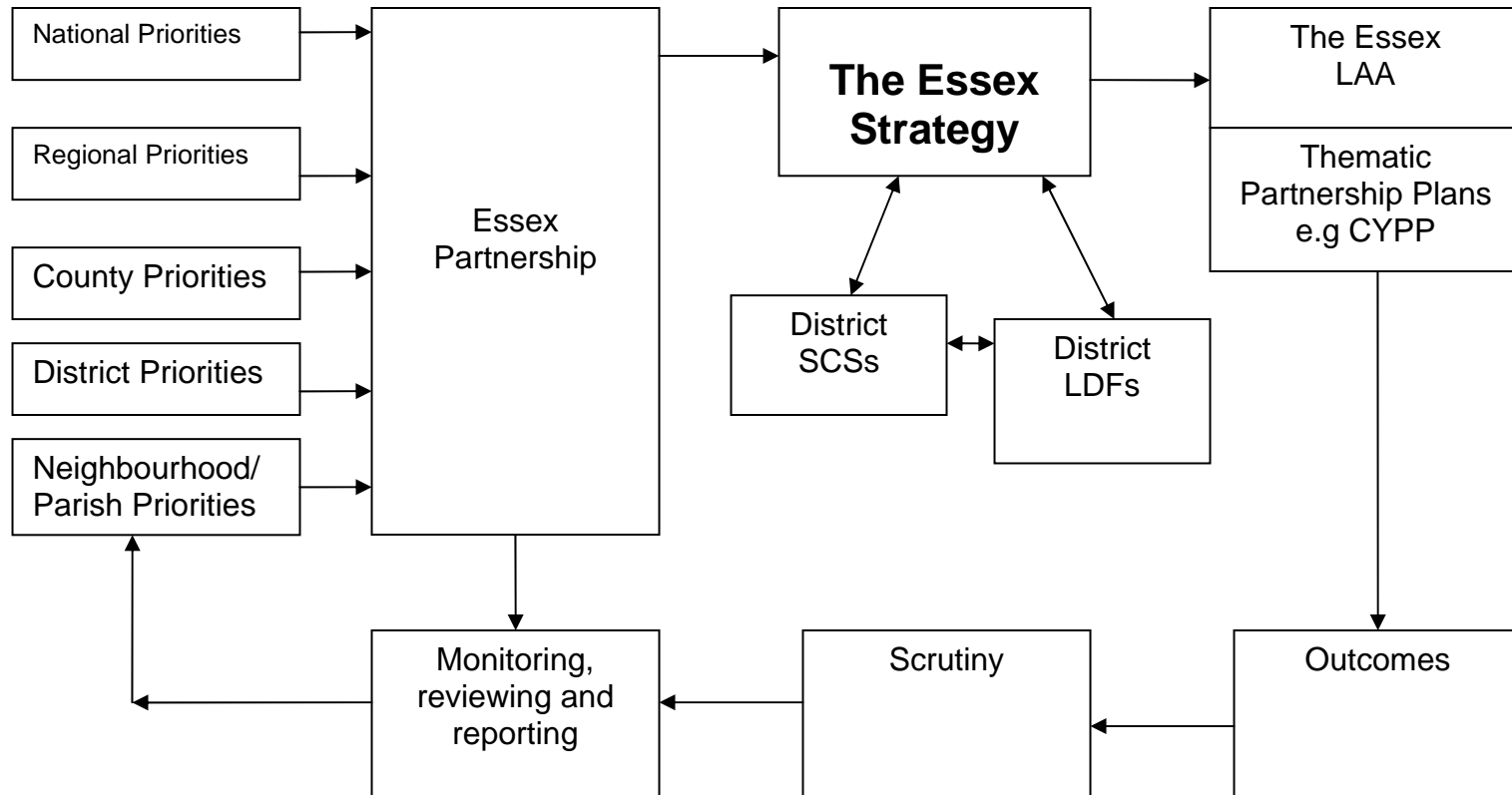
District Local Strategic Partnerships and Strategies

There are 12 District LSPs in Essex that have developed their own sustainable community strategies. Each community strategy is unique to the area that it covers, although there are often issues that are common to all. It is important that the Essex Partnership works closely with the district LSPs and other partnerships, such as those in the growth areas, to ensure we complement each other's work and do not duplicate effort.

The Essex Strategy will be implemented alongside the local community strategies, through the Essex Partnership and the 12 District LSPs.



Relationship to other strategies, plans and priorities



The Outcomes

The outcomes within the strategy are those which were considered at the meeting of the Essex Partnership Forum on 10 December 2007. It therefore reflects the major priorities of the different functional partnerships across the county.

The most important and urgent outcomes stated in the Strategy - on which we need to achieve a special focus over the next three years - will feature in the Local Area Agreement. That is where we will define targets for those outcomes. Otherwise, anything that is in the Strategy should be implemented by one of the functional partnerships, such as the Children and Young People's Partnership.

This broader content would then also act as a kind of 'reservoir' from which future LAAs might be drawn. In some cases, the Partnership may not be ready to make quick action towards an important outcome. Lack of readiness may be a reason why some items are left out of the LAA. If that is so, we will invite the Partnership to set up some 'task and finish groups' to strengthen our capacity for joint action.

Public & Stakeholder Engagement

In the development of the Essex Strategy it was vital that we understood the priorities and concerns of as many people in Essex as possible and so we carried out a comprehensive consultation with members of the public and partner organisations. This included:

Best Value General Satisfaction & Tracker Surveys: These were analysed to capture the views of approx. 20,000 Essex residents, what their priorities were and what they felt most needs improving in their area.

On-line consultation: Accessed through the Essex Partnership website this survey asked which factors are important in making Essex a good place to live, what they like about living in Essex and what needs to change to improve their quality of life.

Focus groups: These were run in each district to discuss with a demographically representative sample of the population, issues that were important to them and explore ways that these might be tackled by the Essex Partnership.

Local Democracy Week: 115 primary and secondary schools across Essex were visited during November 2007 to capture the views of Children and Young People.

District/Partner Strategies and Stories of Place: Each District LSP and Essex Partnership member organisation articulated their own priorities and key issues through their own strategies and 'Story of Place', these were all fed in to the outcomes that the Essex Partnership considered at the Forum.

Evidence Based

Members of the Essex Partnership have undertaken a Joint Strategic Needs Assessment (JSNA) which provides analyses of data to show the health and well-being status of local communities; defines where inequalities exist; and incorporates local community views around priorities for service improvement. It is therefore a robust evidence-base for us to agree the strategic direction of service delivery and we will use it to inform our future commissioning and to improve outcomes for the residents of Essex.

In recognition of the importance of understanding the distinctive nature of different parts of Essex, the JSNA contains a local profile for each of the twelve district / borough councils and two unitary authorities together with a full JSNA covering the county of Essex. The JSNA has played a significant role in enabling partners to determine shared priorities for inclusion in district sustainable community strategies and the Essex Strategy

A Diverse County

By highlighting the outcomes that appear in each of the 12 district strategies, section 3 highlights which district LSPs are signed up to shared working on each outcome.

The Essex Strategy and LAA2 must also take account of the pockets of deprivation that we have in Essex. The approach being proposed is for 'hotspot' areas being identified for each of the Essex Strategy/LAA outcomes. Under each priority within the LAA there would be two sets of targets: the countywide ones; and those for the 'hotspots'. This would reflect the fact that special needs do not always coincide in one place. It should also help to build on existing actions on special need within the planning of mainstream services.

Monitoring progress

The primary means by which we will measure progress against the Essex Strategy will be through the indicators and targets set out in the Local Area Agreement, as this is the delivery mechanism for the Strategy. However, we are also keen to understand changes in people's experience of living in Essex during the lifetime of the Strategy and increase our knowledge of how the actions of the Essex Partnership help to improve people's Quality of Life. It is proposed that this will be done through a series of tracking measures, which will give a wider context to the performance recorded against specific indicators within the LAA. This is a bold step that will allow positive public engagement with local people and closer reflect their experiences of their own quality of life, but at this stage these will remain as tracking measures and so targets will not be set – if the targets set within the LAA are met, then a rise in these more over-arching indicators should be expected as well.

These tracking measures have been selected to fit with the thematic structure of the Essex Strategy (and therefore the LAA) and can be summarised as follows:

Overall measure: Satisfaction with the local area as a place to live

Our People: Personal health and well-being

Our Community: Sense of belonging to local neighbourhood

Our Economy: Financial Well-being

Our World: Engagement in Environmentally-friendly behaviours

Further details about the wording of the proposed questions are set out below against the relevant thematic chapter. Surveys will be carried out twice a year to track performance against these measures and then analysis of the results will be carried out to understand any fluctuations in the public's experience of Quality of Life in Essex.

3. What the Partnership will do for Essex

The Strategy includes sixty-four action areas that have been recognised as significant for fulfilling people's potential and enjoying high quality of life in various parts of Essex. Some actions will be more important in some parts of the county than others. The Partnership recognises this diversity and calls on different geographical tiers to work together in ways that match the varying needs of different localities.

The Strategy is an agenda for change. It is not a delivery document. It sets out what we want to do. How we will do it is articulated through the Local Area Agreement and other county-wide plans such as the Children and Young People's Plan.

Monitoring Progress (overall measure)

We will judge our progress in reaching the objectives within the Essex Strategy by asking Essex residents

“Overall how satisfied are you with your local area as a place to live?” (NI 5)

Our People

We want people to fulfil their potential and enjoy life. Some of the key issues in achieving this are:

- **Knowledge and skills** - The life chances of children depend to a great extent on educational achievement. Research shows that adults with GCSE qualifications earn on average 18% more than those without GCSEs; those with A-levels or a degree earn on average 24% and 48% more respectively. In 2006, 59% of Essex pupils gained 5+ A-C GCSE grades, this was slightly below the England average of 59.2%. There is wide variation within Essex: in Rochford nearly 80% of pupils gained 5+ higher grade GCSEs; in Maldon only 40%. Across Essex as a whole, 2.4% of pupils left school without a GCSE, slightly more than the England average of 2.2%. The Partnership aims to help children have the best possible start in life.
- **Making the most of old age** - Today, 18 % of the population of Essex is at least 65 years old with almost 2.5% aged 85 and over. By 2025, these figures are expected to rise to 23% and almost 4% respectively. The population aged 85 and over is expected to at least double in Rochford, Castle Point, Harlow, Basildon, Brentwood, Maldon and Uttlesford. This poses several challenges. One is to help older people make the most of retirement, for example through volunteering and other community activities. But as people get older they can become less mobile and many become isolated and unable to access the services they need. Public services need to find new ways to promote independence, recognising the contribution made by unpaid carers – of whom in 2001 there were about 159,000 in Essex.
- **Keeping healthy** – Life expectancy is a measure of overall life chances, can indicate areas of poor health and is influenced by economic and social factors. Life expectancy varies across the county and although at district level the lowest life expectancy is 78.4 years, a ward analysis exposes areas where life expectancy is even lower. The lowest ward life expectancy is in Pier ward in Tendring (70.1 years) whereas the highest is in Littlebury ward in Uttlesford (88.7 years). This is a difference of 18.6 years from one part of the county to another. The reasons for these health inequalities are complex and link with people's social and demographic circumstances such as their educational attainment, occupation, income, type of housing, gender, ethnicity and where they live. Lifestyle behaviours such as smoking, drinking, diet and risk taking also have an impact. Good health is the foundation of a fulfilling life and the Partnership is committed to finding ways of reducing these health inequalities.

The outcomes that the strategy aims to tackle under the “Our People” theme are listed below and include (highlighted in yellow) those that require focus over the next three years and therefore make up the priorities for the Essex Local Area Agreement 2008-11.

Responsible thematic partnership(s):

- Children & Young People’s Strategic Board
- Community Wellbeing and Older People Board

The outcomes within the Essex Strategy will be tackled not only by the Local Area Agreement but also through the relevant action plan of each responsible thematic partnership.

Monitoring Progress

We will judge our progress in reaching the objectives within the “Our People” theme by using a validated measure of health and well-being, known as EQ-5D, which is likely to be used for NI 119. This is based on a set of 5 questions on

- Mobility
- Self-care
- Usual activities (e.g. work, study, housework, family or leisure activities)
- Pain/Discomfort
- Anxiety/Depression

which will provide an overall picture of health and well-being in Essex and also allow the Partnership to focus in on any of the 5 issues as appropriate.

Support in District Strategies:

	East		South			West				Mid		
	COL	TEN	BAS	CAS	ROC	BRE	EPP	HAR	UTT	BRA	CHE	MAL
Increase educational achievement & skills												
1) Children progress well & achieve more at all key stages (NI 72-75, 83, 92-98, 100-101)	✓	✓	✓	✓	✓	✓	✓	✓	✓	✓	✓	✓
2) Fewer primary and secondary school pupils in Essex who are persistently absent from school (NI 87)									✓			
3) Fewer 16-18 year olds in Essex who are not in education, employment or training (NI 117)		✓	✓	✓			✓		✓			✓
Support vulnerable people												
4) Increase the number of older people supported to live at home (NI 134, 139)		✓	✓	✓		✓			✓			
5) More support for carers (NI 135)			✓	✓					✓			
6) Support vulnerable people achieve independent living (NI 141)												
7) Reduce 'fuel poverty' (NI 187)						✓	✓		✓			
8) Protect vulnerable people at risk of abuse/neglect (NI 60)									✓			
9) Improve access to childcare by low-income families (NI 118)												
Better public health and longer lives												
10) Improve life expectancy (NI 120)	✓	✓	✓	✓	✓	✓	✓	✓	✓	✓	✓	✓
11) Reduce obesity (NI 56)	✓	✓	✓	✓	✓	✓	✓	✓	✓	✓	✓	✓
12) Reduce smoking prevalence (NI 123)	✓	✓	✓	✓	✓	✓	✓	✓	✓	✓	✓	✓
13) Improve mental health and well being (NI 51, NI 150)		✓		✓	✓		✓		✓		✓	
14) Reduce teenage conceptions (NI 112)		✓		✓			✓	✓	✓			
15) Reduce sexually-transmitted diseases (NI 113)				✓			✓	✓	✓			
16) Raising birth weights												
17) Reducing infant mortality												
18) Promote breastfeeding (NI 53)									✓		✓	

Essex Strategy Vol 1 Draft V0.12 – 27 February 2008

	East		South			West				Mid		
	COL	TEN	BAS	CAS	ROC	BRE	EPP	HAR	UTT	BRA	CHE	MAL
19) More immunisation												
Help parents raise their children well												
20) Parents feel able with community help to raise their children well									✓			

Our Communities

We want people to belong to strong and supportive communities. Some of the key issues in achieving this are:

- **Making Essex the Safest Place to Live in England** - Essex is already one of the safest places in the country with comparatively low levels of crime. However, we want to make Essex even safer. Through the effective use of community-based partnerships we will deliver initiatives that will tackle persistent crime and disorder problems including anti-social behaviour, and address the causes of crime through early intervention initiatives across our service areas. We will also help to make Essex feel safer by communicating our community safety successes to the public more effectively.
- **Creating Sustainable Communities and Delivering Infrastructure** – We will be subject to large-scale housing growth in Essex up to 2021. We must ensure that such growth does not damage the integrity of our communities. These require adequate local jobs, retail and service provision, community facilities, social infrastructure (especially education and health), transport infrastructure and appropriate public transport provision – recognising that we already have a significant transport infrastructure deficit in the County. Local communities also need to be cohesive; they must provide for the needs of different social groups, promote social networks and interaction, and design out crime and anti-social behaviour. All tiers of local government and partners in Essex have a role to play in ‘place-shaping’.
- **Culture and Sport 2012** – The Olympic Games and Paralympic Games take place in London in 2012 with the Cultural Olympiad starting 4 years earlier in September 2008 as the Beijing Games close. Essex already boasts a rich mosaic of sporting and cultural life, but the hosting of the Games in the UK provides a once in a lifetime opportunity to motivate people in all walks of life to achieve more and to reach their full potential. The government has committed to securing a legacy that is nationwide and Essex is committed to maximising the benefits through celebrating the cultural Olympiad, encouraging increased sports participation and achievement in a way that involves everyone.
- **Urban Design Quality** – Delivery should not simply be a “housing numbers game” or promote a few “exemplar projects” (e.g., Eco-towns, model designs). With so much new development proposed up to 2021, Essex needs to ensure that all new development achieves high-quality design as a legacy for future generations. About two-thirds of the new homes proposed in Essex (2006-2021) have yet to receive planning permission, so there is still significant

leverage to influence their design quality. The same principle should also apply to the large scale town centre, regeneration, employment, and retail development likely to take place up to 2021.

- **Housing Affordability** – Some local households are unable to purchase housing on the open market or for rent. However, the current delivery of affordable housing by registered social landlords, local authorities, and developers is well below the estimated household demand. The programme for new housing in Essex should ensure that increased provision for affordable housing is achieved – we want our citizens, if they so choose, to be able to live as adults in the communities they grew up in as children.

The outcomes that the strategy aims to tackle under the “Our Communities” theme are listed below and include (highlighted in yellow) those that require focus over the next three years and therefore make up the priorities for the Essex Local Area Agreement 2008-11.

Responsible thematic partnership(s):

- Essex Community Safety, Drugs and Alcohol Strategic Partnership
- Essex Working Group for the London 2012 Olympic Games and Paralympic Games

The outcomes within the Essex Strategy will be tackled not only by the Local Area Agreement but also through the relevant action plan of each responsible thematic partnership.

Monitoring Progress

We will judge our progress in reaching the objectives within the “Our Communities” theme by asking Essex residents “**How strongly do you feel you belong to your immediate neighbourhood?**” (NI 2)

Support in District Strategies:

	East		South			West				Mid		
	COL	TEN	BAS	CAS	ROC	BRE	EPP	HAR	UTT	BRA	CHE	MAL
Improve access to housing												
21) Ensure a range of affordable homes are available (NI 155)	✓	✓	✓	✓	✓	✓	✓	✓	✓	✓	✓	✓
22) Reduce homelessness (NI 156)				✓							✓	
23) Increase supply of suitable accommodation for care leavers, youth offenders and runaways (NI 147, 46)							✓		✓			✓
Improve access to services												
24) Improved access for residents to education, health and leisure facilities (NI 175)					✓	✓	✓	✓	✓	✓		✓
25) Ensure access to local jobs and community facilities (NI 176)					✓	✓	✓	✓	✓	✓		✓
Improve transport												
26) Improve the condition of the roads (NI 168-69)									✓			
27) Minimise congestion on the roads (NI 167)	✓		✓	✓	✓	✓	✓	✓	✓	✓	✓	✓
28) Improved public and community transport (NI 177-178)	✓	✓	✓	✓	✓	✓	✓	✓	✓	✓	✓	✓
Strengthen the voluntary sector												
29) Increase formal participation in voluntary clubs & groups (NI 6)			✓	✓	✓		✓		✓			✓
30) Increase levels of neighbourly helpfulness												
31) Achieve a good level of support for young carers									✓			
Make communities safer												
32) Better protection from road accidents (NI 47-48)				✓		✓	✓		✓			
33) Better protection from fires						✓						
34) Reduce substance misuse - particularly by young people (NI 115, 38, 40)	✓	✓	✓	✓	✓	✓	✓	✓	✓	✓	✓	✓

Essex Strategy Vol 1 Draft V0.12 – 27 February 2008

	East		South			West				Mid		
	COL	TEN	BAS	CAS	ROC	BRE	EPP	HAR	UTT	BRA	CHE	MAL
35) Reduce re-offending by adults and young people (NI 18,19)	✓	✓	✓	✓	✓	✓	✓	✓	✓	✓	✓	✓
36) Reduce number of first time entrants to the criminal justice system (NI 111)	✓	✓	✓	✓	✓	✓	✓	✓	✓	✓	✓	✓
37) Reduce serious violent crimes and assaults causing injury (NI 20)	✓	✓	✓	✓	✓	✓	✓	✓	✓	✓	✓	✓
38) Reduce incidents of domestic violence	✓	✓	✓	✓	✓	✓	✓		✓	✓	✓	✓
39) Reduce serious acquisitive crimes (NI 16)	✓	✓	✓	✓	✓	✓	✓	✓	✓	✓	✓	✓
40) Provide specialist support to victims of a serious sexual offence (NI 26)	✓	✓	✓	✓	✓	✓	✓	✓	✓	✓	✓	✓
41) Reduce racial crime	✓	✓	✓	✓	✓	✓	✓	✓	✓	✓	✓	✓
42) Reduce incidents of arson (NI 33)	✓	✓	✓	✓	✓	✓	✓	✓	✓	✓	✓	✓
43) Reduce crime on public transport	✓	✓	✓	✓	✓	✓	✓	✓	✓	✓	✓	✓
44) Reduce number of children and young people experiencing crime or bullying (NI 69)	✓	✓	✓	✓	✓	✓	✓	✓	✓	✓	✓	✓
45) Reduce antisocial behaviour (NI 17)	✓	✓	✓	✓	✓	✓	✓	✓	✓	✓	✓	✓
46) Reduce fear of crime	✓	✓	✓	✓	✓	✓	✓	✓	✓	✓	✓	✓
Make communities cleaner												
47) Improved street and environmental cleanliness (NI 195)	✓		✓	✓	✓	✓	✓		✓	✓		
Promote participation in sport and culture												
48) Promote participation in the arts and cultural activity (NI 11)	✓	✓	✓		✓	✓	✓		✓	✓	✓	✓
49) Increase participation in sport – particularly for young people (NI 8, 57)			✓	✓	✓	✓	✓	✓	✓	✓	✓	✓
50) Provide play facilities that meet local needs				✓					✓			✓
51) Maximise the benefits from the 2012 Olympics	✓					✓		✓				

Our Economy

We want to promote sustainable growth with high value jobs; and ensure adequate infrastructure is in place to support this. Some of the key issues in achieving this are:

- **Large-Scale Regeneration** – The Priority Areas for Regeneration & growth in Essex within Thames Gateway South Essex, Harlow, Haven Gateway (Clacton, Harwich, and Colchester) and Chelmsford/ Heart of Essex will be subject to major transformational change. Provision for urban growth in the form of new housing and commercial development will have to be coordinated and phased with the regeneration of the existing urban areas. In addition, growth will have to be carefully focussed so as to facilitate and promote regeneration, rather than drawing resources away from regeneration areas. Effective multi-sector delivery programmes will be required to deliver regeneration in these areas involving all partners.
- **Economic and Job Growth** – New housing growth in Essex must be properly aligned with job growth to reduce the reliance upon people commuting out of the County (which is unsustainable and puts pressure on transport infrastructure). We need to support the private sector to create the jobs in Essex that will enable our citizens to work in the County and we must take advantage of opportunities such as the London 2012 Olympic Games and Paralympic Games that it is estimated could generate an economic benefit of £139M for Essex. Considerable strategic priority must be put on growing the Essex economy.
- **Relationships with London** – We are on the borders of the world’s greatest city. We celebrate that fact. It means there are enormous economic and cultural opportunities on our doorstep. It also means that we must involve ourselves in the development of London - the Channel Tunnel Rail Link, Stratford City, Olympics 2012, Crossrail (2017+), London job growth, and the spatial focus of a significant proportion of London’s future development growth into North & East London – will all have a major impact on Essex. We will need to actively manage these impacts.

The outcomes that the strategy aims to tackle under the “Our Economy” theme are listed below and include (highlighted in yellow) those that require focus over the next three years and therefore make up the priorities for the Essex Local Area Agreement 2008-11.

Responsible thematic partnership(s):

- Greater Essex Prosperity Forum

The outcomes within the Essex Strategy will be tackled not only by the Local Area Agreement but also through the relevant action plan of each responsible thematic partnership.

Monitoring Progress

We will judge our progress in reaching the objectives within the “Our Economy” theme by asking Essex residents

“Which of the descriptions comes closest to how you feel about your household’s income nowadays?”

- Living comfortably on present income
- Coping on present income
- Finding it difficult on present income
- Finding it very difficult on present income”

Support in District Strategies:

	East		South			West				Mid		
	COL	TEN	BAS	CAS	ROC	BRE	EPP	HAR	UTT	BRA	CHE	MAL
Promote sustainable economic growth												
52) Higher educational attainment and skills levels in the adult population (NI 163-165)	✓	✓	✓	✓	✓	✓	✓	✓	✓	✓	✓	✓
53) Stimulate the creation of more high value-added jobs in Essex (NI 166)			✓	✓		✓					✓	
54) Attract inward investment		✓	✓			✓	✓		✓			✓
55) Stimulate business innovation			✓	✓		✓	✓					
56) Stimulate business expansion (NI 171, 172)	✓		✓				✓	✓	✓		✓	
57) Regenerate selected town centres			✓	✓			✓					
58) Help jobless people and disadvantaged groups to enter the workforce (NI 152, 153)							✓	✓			✓	

Our World

We want to promote sustainability and protect the county's physical environment. Some of the key issues in achieving this are:

- **Climate Change** – Spatial planning must enable society to minimise its impact on climate change by reducing greenhouse gas emissions. Future new development will have to reduce its carbon footprint by using sustainable construction methods and aiming for a carbon neutral approach by 2016. The future pattern of new development should minimise the need to travel whilst enabling use of travel modes other than the private car; promote energy efficiency; and avoid areas at risk from flooding (from sea-level rise and intense storm events).
- **Environmental Protection** – Growth pressures will put increased stress on the County's natural and built environment. This includes nature conservation and key habitats; valued landscapes; heritage and historic features; air and water quality; water resources; outdoor recreation areas; the undeveloped coast and countryside. The challenge will be to manage urban growth so that it does not damage these assets and so that the County's quality of life (in environmental and health terms) can be maintained and enhanced.
- **Energy Generation** – The government's strategy for UK energy supply is changing and this will create challenges for Essex. Projects that could impact on Essex include nuclear power (e.g., Bradwell), natural gas importation, agricultural biomass and wind farms (e.g., Essex coast and countryside). Essex local authorities and partners will have a key community leadership role to play in shaping thinking on these matters.
- **Waste** – Essex households generate more waste per person than English households – 78kg more per person than the English average in 2005. Waste disposal in Essex is therefore a major environmental issue. Every year Essex Households throw away over 700,000 tonnes of rubbish, about 500kg for every adult and child living in Essex. There are ways to reduce the environmental burden this creates and Essex has a good record in this. We recycle more than a fifth of our waste. In 2005/06 we recycled some 143,200 tonnes, around 108 kg per person. This is far more than most other local authorities achieve. However, it is not enough. We urgently need to reduce waste and recycle more.

The outcomes that the strategy aims to tackle under the “Our World” theme are listed below and include (highlighted in yellow) those that require focus over the next three years and therefore make up the priorities for the Essex Local Area Agreement 2008-11.

Responsible thematic partnership(s):

- Waste Partnership

The outcomes within the Essex Strategy will be tackled not only by the Local Area Agreement but also through the relevant action plan of each responsible thematic partnership.

Monitoring Progress

We will judge our progress in reaching the objectives within the “Our World” theme by asking Essex residents about their engagement in environmentally friendly behaviours:

Which of the following statements best represents your choices in relation to the environment?

	I am already doing this and intend to keep it up	I haven't really thought about doing this	I don't really want to do this
Recycling more	<input type="checkbox"/> ₁	<input type="checkbox"/> ₂	<input type="checkbox"/> ₃
Wasting less food	<input type="checkbox"/> ₁	<input type="checkbox"/> ₂	<input type="checkbox"/> ₃
Cutting down on gas and electricity use at home	<input type="checkbox"/> ₁	<input type="checkbox"/> ₂	<input type="checkbox"/> ₃
Reducing water use at home	<input type="checkbox"/> ₁	<input type="checkbox"/> ₂	<input type="checkbox"/> ₃
Buying food produced locally rather than abroad	<input type="checkbox"/> ₁	<input type="checkbox"/> ₂	<input type="checkbox"/> ₃
Using a car less	<input type="checkbox"/> ₁	<input type="checkbox"/> ₂	<input type="checkbox"/> ₃
Flying less	<input type="checkbox"/> ₁	<input type="checkbox"/> ₂	<input type="checkbox"/> ₃

Support in District Strategies:

	East		South			West				Mid		
	COL	TEN	BAS	CAS	ROC	BRE	EPP	HAR	UTT	BRA	CHE	MAL
Protect the environment												
59) Ensure development avoids adverse impacts on the environment			✓	✓	✓	✓	✓	✓	✓			
60) Manage the Essex countryside			✓			✓	✓		✓	✓		
61) Reduce or limit the extent of Essex's ecological footprint (NI 186, 188)	✓		✓	✓				✓	✓		✓	
62) Manage risk from flooding and coastal erosion (NI 189)									✓	✓		✓
Reduce waste and recycle more												
63) Reduce the amount of waste produced in Essex (NI 191-193)			✓			✓	✓		✓		✓	
64) Increase recycling levels (NI 192)				✓	✓	✓			✓	✓		✓

4. How the Partnership will do these things

The Partnership expects its members to give effect to these goals through their shared plans such as the Children & Young People's Plan and also through single organisation strategies. All bodies in the Partnership should look out for opportunities to help one another achieve mutually supportive objectives. However, the key delivery plan for 'Liberating Potential: Fulfilling Lives' will be the Local Area Agreement, which will set the uppermost priorities for each three-year period.

The Essex Partnership will monitor the delivery of these objectives.

When we drew up this Strategy, the following themes emerged as important ways of setting about our task together:

a) A programme and project approach to improving partnerships

- Shared goals that add value to existing partnership activity
- Ways of working that are focused on completing practical tasks

We will judge our progress on this by asking Essex residents “**How satisfied are you with public services in your area?**”

b) Strengthening the 3rd sector to achieve a thriving voluntary and community sector.

We recognise that

- a strong, diverse, vibrant and independent 3rd sector is a vital component of a fair and enterprising society
- where a quality environment exists, community and voluntary organisations are able to actively contribute to the delivery of the Partnership targets

We will

- welcome the advocacy role of the voluntary and community sector
- provide services with and through the voluntary sector

We will judge our progress on this by asking whether Essex is "**an environment for a thriving 3rd sector**" - criteria will include

- full adherence to Compact principles and Codes of Practice
- sustainable (3 year funding)
- Full cost recovery
- evidence of "spread" of contracts awarded to voluntary and community organisations
- evidence of partnership working

c) Empowerment of local communities

- Enabling people to shape public services in their localities
- Improving people's ability to influence decisions that affect their communities

We will judge our progress on this by asking Essex residents if "**they can influence decisions in their locality?**"

d) Innovation and flexibility in public services

- Freeing resources by more efficient working, with value for money
- Finding the most effective ways of improving quality of life

We will judge our progress on this by measuring whether public services are **offering value for money.**

e) Promoting equality and diversity through outcome targets

- Recognising that needs and priorities vary across the county, while strengthening community cohesion
- Meeting high needs of localities and social groups through higher targets

We will achieve this objective by conducting Equality Impact Assessments on the Strategy. We will judge our progress on this by asking Essex residents if they “**believe people from different backgrounds get on well together in their local area?**”

The Essex Partnership will ensure that these principles are observed in any joint working designed to deliver the goals of the Essex Strategy; and especially in the work on achieving the intended outcomes of Local Area Agreements over the next ten years.

The Essex Strategy will be updated and issued annually. In addition, a second volume will be available which will contain monitoring information and the state of the issues identified within the Essex Strategy.
