

## **THAMES GATEWAY SOUTH ESSEX PARTNERSHIP**

### **What is it?**

The Thames Gateway South Essex Partnership was established as a Company limited by Guarantee in May 2002, with the purpose of “promoting the comprehensive regeneration of the region abutting the North bank of the River Thames”.

Through its Board, the aim is to provide, facilitate and coordinate strategic leadership for Thames Gateway South Essex, and to champion the area to the wider investment community, both public and private.

### **What are its terms of reference?**

In summary, these are as follows:

- (i) improve skills and employment opportunities across a range of economic sectors, and promote a competitive business environment
- (ii) secure leading edge infrastructure, particularly improved and sustainable transport
- (iii) secure investment and site development to promote urban renaissance and provide employment opportunities
- (iv) create a high level quality of sustainable urban and rural environment, which enhances the natural assets of the area and harness features such as the River Thames
- (v) improve the health and well-being of all communities throughout South Essex. Promote a high profile and positive image of Thames Gateway South Essex and market the opportunities in the area for investment and development.

The Partnership published a vision for the future of the Thames Gateway South Essex area in September 2003, which defined the overall aim of the partnership as “providing an improved quality of life for all the people of South Essex and to allow the area to participate, via the Thames Gateway initiative, in the prosperity of the wider South East and East of England”.

Since the publication of the Government’s Sustainable Communities Plan in February 2003, the Partnership has further reviewed its aim, objectives and membership to reflect the requirements of the delivery phase of the Thames Gateway South Essex regeneration and growth programme.

## **Who Attends?**

Membership of the Company is restricted to those organisations who make a financial contribution as members of the partnership. The Board may invite other organisations to join the Board, without being Directors of the company.

The members of the Board are drawn from:

- Basildon District Council
- Castle Point Borough Council
- Essex County Council
- Rochford District Council
- Southend-on-Sea Borough Council
- Thurrock Council
- EEDA
- Learning and Skills Council, Essex
- Business Link for Essex
- Essex Strategic Health Authority (on behalf of the Health Forum)
- Anglia Polytechnic University (on behalf of the Education and Skills Forum)
- Thurrock UDC
- Basildon Renaissance Partnership
- Renaissance Southend
- Essex Business Consortium

In addition, Go-East, ODPM and English Partnerships are invited to attend the meetings of the Board and its working groups.

The operating structure around Thames Gateway South Essex is outlined on the attached.

## **Is it statutory/non-statutory?**

The company is a legal entity operating within a framework where a number of the partners have specific statutory responsibilities in the context of the Gateway.

## **What is our contribution?**

Our subscription is currently £15,000 per annum. In addition, there is considerable input at member and senior officer level. In particular, the Leader, Chief Executive and Head of Planning Services are especially involved. Other officers and members also attend specific bodies connected into the Gateway e.g. Housing Sub-Regional Group, etc.

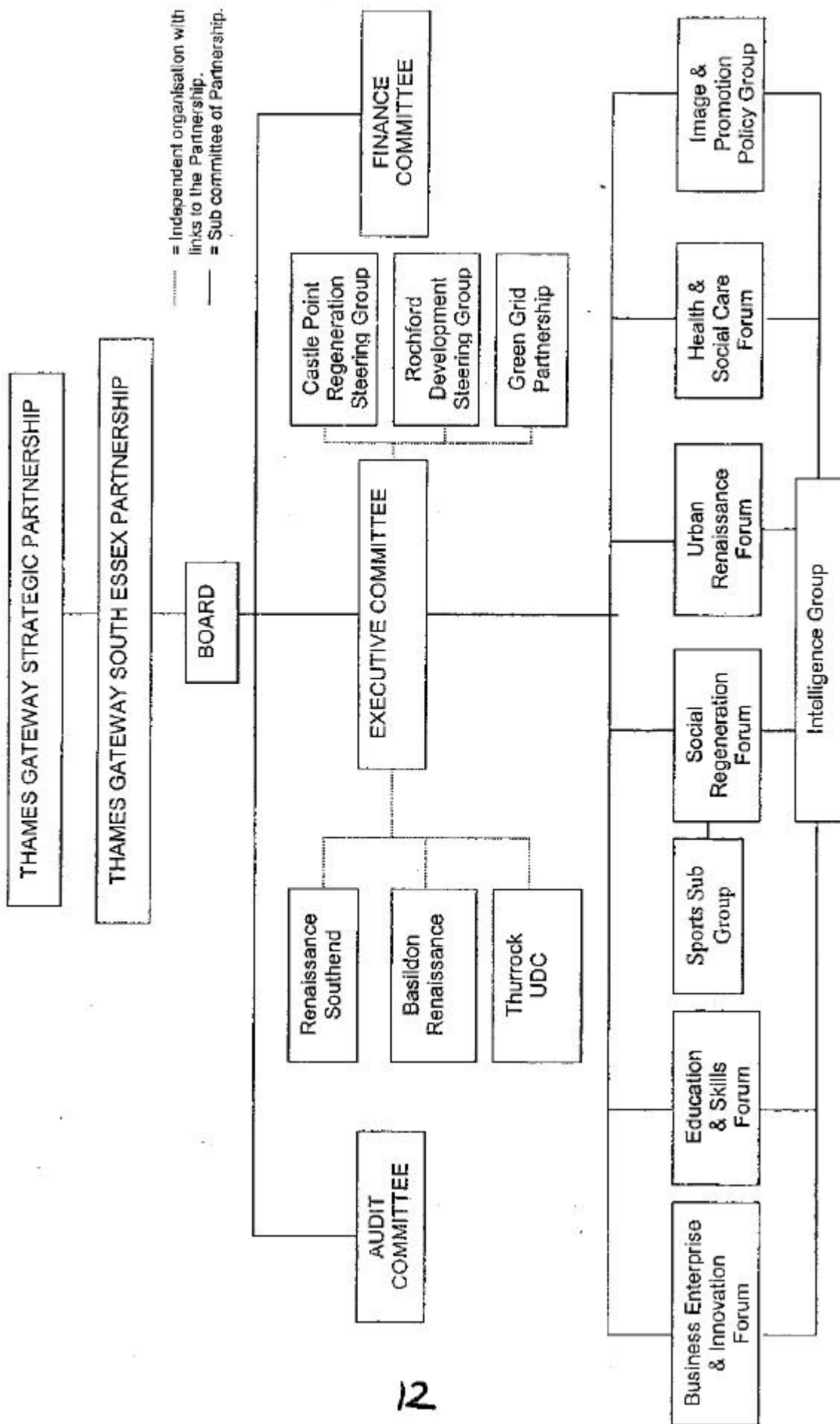
### **How often does it meet?**

The Board meets 4 to 6 times per year. Those groups which report into the Board often meet on a more frequent basis, or as required. Both the Leader and the Chief Executive are on the Finance Committee, the Chief Executive is on the Executive Committee and the Head of Planning Services is on the Urban Renaissance Forum, Green Grid and Transportation Sub Groups.

### **Outputs to Date**

The Council has been successful in contributing to the policy framework and shaping the image for Rochford within the Thames Gateway context. We have also been successful in securing over £1m of funds for specific projects in the District e.g. Cherry Orchard Jubilee County Park, Rayleigh Windmill, Websters Way.

# OPERATING STRUCTURE – COMMITTEES & WORKING GROUPS



= Independent organisation with links to the Partnership.  
 = Sub committee of Partnership.