
SUPPORTING PEOPLE LOCAL POSITION STATEMENT

1 SUMMARY

- 1.1 The Rochford Supporting People position statement is appended for Members' consideration.

2 INTRODUCTION

- 2.1 At the Committee meeting on 2 April, Members considered a progress report on the implementation of the complex "Supporting People" regime, which brings together funding from a variety of sources into a single system for financing housing support services (the Supporting People Grant) from April 2003.
- 2.2 An over-arching Essex Supporting People Strategy is being produced and it is important that each area's local needs are included within this. The strategy will be considered by the Member-level, Essex Commissioning Body in July. Councillor M G B Starke will be the District Council's representative on this body.
- 2.3 The appended Rochford position statement summarises the current provision of, and need for, supported housing services for a wide variety of client groups. It recognises that, in some areas, there is a need for more comprehensive research and information.

3 RESOURCE IMPLICATIONS

- 3.1 It is important that all current support providers are identified in order that interim contracts can be finalised before existing funding streams cease in April 2003.
- 3.2 There is also a short term opportunity to develop new services where they are needed for "passporting" into the new Supporting People Grant. After April 2003 there is likely to be greater difficulty in securing funding for new schemes.

4 RECOMMENDATION

- 4.1 Subject to Members' comments, it is proposed that the Committee
RESOLVES

To approve the appended Rochford Supporting People Position Statement.

G Woolhouse

Head of Housing, Health & Community Care

Background Papers:

None

For further information please contact Graham Woolhouse on:

Tel:- 01702 318044

E-Mail:- graham.woolhouse@rochford.gov.uk



Rochford District Council

SUPPORTING PEOPLE

POSITION STATEMENT

FEBRUARY 2002



FOREWORD

This is an initial position statement published as part of the development of a local Supporting People Strategy for Rochford.

Supporting People aims to improve the quality of life for vulnerable people by providing a range of housing related support which helps people to live independently.

Supporting People promotes strategic partnership working between housing providers, the NHS, Social Services and the National Probation Service. Those partners contribute to a local Core Strategy Group which has the responsibility for developing the local Supporting People Strategy.

Members of the local Core Strategy Group welcome the opportunity to present the recommended initial position statement for Rochford and they are grateful for the continuing contribution of all local partners.

This document outlines the current provision of supported housing and related services as at February 2002 but it is acknowledged that additional assessment of needs is still required for some client groups.

Any comments on this initial position statement should be sent to Andrew Wilson, Local Supporting People Officer, Rochford District Council, Council Offices, South Street, Rochford, SS4 1BW

Email:- andrew.wilson@rochford.gov.uk

CONTENTS

1. The Rochford area
2. Introduction
3. Profile of Supported Housing in Rochford
4. Service user statements
 - Older people with support needs
 - People with mental health problems
 - People with learning disabilities
 - People with physical or sensory disability
 - Single homeless people with support needs
 - People with drug & alcohol related problems
 - Offenders or people at risk of offending
 - Young people at risk or leaving care
 - Women at risk of domestic violence
 - People with HIV/AIDS
 - Homeless families with support needs
 - Refugees
5. Capital expenditure priorities
6. Conclusions
7. Appendices
 - i. Rochford Supporting People Action Plan
 - ii. Supporting People policy making arrangements in Rochford
 - iii. Decision Making bodies for Supporting People in Essex
 - iv. Tables of Supply Mapping

1. THE ROCHFORD AREA

- 1.1 The District of Rochford contains two urban areas (Rayleigh and Rochford) and a number of smaller settlements although it is largely rural in character and contains 14 parishes/Town Councils. The District is contained within an area of 65 square miles and bounded by the River Crouch to the North and Southend-on-Sea to the South.
- 1.2 The District has a population of approximately 79,200, 1% of which come from ethnic minority backgrounds and contains approximately 32,000 households, with owner-occupation around 90% being the predominant housing tenure. Unemployment is low, standing at just 1.9%. The number of over 80 year old people is forecast to rise to almost 2,200 by 2011.
- 1.3 The 1999 Housing Needs Study found that around 3,900 households included someone with a special need, 67% of whom are over 60 years old. The largest identified group with the potential need for supported housing, were 2,140 people who have difficulty walking. Only 95 people who use wheelchairs actually live in suitably adapted properties to meet their needs.

2. INTRODUCTION

2.1 This initial position statement sets out how Rochford District Council in partnership with key stakeholders is meeting the aims of the Government's Supporting People programme which is due for implementation from April 2003. It includes:

- an overview of supported housing in the Rochford District
- the County and district consultation and engagement processes
- service user statements identifying the findings from the need and supply mapping surveys
- future local priorities for capital expenditure

Introducing Supporting People

2.2 Supporting People has two main objectives.

- To introduce a Supporting People Grant that combines the current different funding sources used for the commissioning and management of supported housing e.g. Supported Housing Management Grant, Housing Benefit (for eligible support costs), the Home Improvement Agency Grant and the Probation Accommodation Grant. Housing Benefit for support costs will form the majority of the Supporting People Grant. Current estimates suggest the grant will be approximately £14 million per year.
- To develop a strategic approach to supported housing through a County-wide strategy and new decision making arrangements (the Essex Commissioning Body).

- 2.3 In preparation for its implementation, "Stage One" of Supporting People (up until April 2003) has required an analysis of the existing provision and need for supported housing at a local level. This "mapping" process enables any gaps in the provision of services to be highlighted. During this period, Transitional Housing Benefit also provides a time limited opportunity to develop and expand support services and Rochford District Council is already considering a proposal to introduce support services for vulnerable tenants and homeless applicants in temporary accommodation.
- 2.4 Furthermore, providers of supported housing are obliged to enter into draft contractual arrangements with the Administering Authority - Essex County Council - in preparation for the change over in funding arrangements.
- 2.5 "Stage Two" of Supporting People after April 2003 sees the formal change over from central Government grant funding to separate service providers to, in two-tier local authority structures, a Supporting People Grant allocated to the Administering Authority (Essex County Council). Service and quality reviews and monitoring mechanisms to ensure services are providing Best Value and meeting local need will be undertaken. For new service users, new eligibility criteria and charging or means testing will also be introduced. The charging system is yet to be finalised.

Supporting People in Essex

- 2.6 As a two-tier local authority, the Supporting People Commissioning Team based at Essex County Council leads the implementation of the Supporting People programme in Essex. A key component of that programme is the preparation of an Essex-wide Supporting People Strategy which should reflect the priorities of the Districts. Although the DTLR's "Supporting People Administrative Guidance" does not require Districts to produce their own strategic documents, a local Strategy will ensure the interests and needs of Rochford are best served.

- 2.7 The local consultative arrangements that are in place for the development of the local Supporting People Strategy (see Appendices) include:-
- (a) an Inclusive Forum for all stakeholders
 - (b) a Core Strategy Group comprising key agencies such as housing, health and social services who are responsible for developing position statements for each client group
 - (c) an officer Project Management Team comprising Housing Services and Housing Benefit staff from both Rochford District Council and Castle Point Borough Council
- 2.8 Rochford District Council and Castle Point Borough Council have taken a joint approach to the implementation of the Supporting People programme in their respective areas. This has included a joint officer appointment and the establishment of a cross-authority officer Project Management Team.
- 2.9 Members of the local Core Strategy Group have approved the local Supporting People Action Plan developed to ensure that the targets set by central Government are met.

3. PROFILE OF SUPPORTED HOUSING IN ROCHFORD

Overview

- 3.1 In the Rochford district, there are a total of 1229 units of supported accommodation provided by a range of housing providers both within the social and private sectors. *Supporting People* services are offered to a range of client groups in Rochford. These include:
- older people
 - people with mental health problems
 - people with learning disabilities
 - people with drug and alcohol problems
 - single homeless people
 - lone parents with young children
- 3.2 Existing services to vulnerable people include sheltered housing, supported housing and floating support. The largest landlord in the area is the local authority. The largest non-local authority housing provider is Springboard Housing Association, the smallest provider represented by a private individual.

Sheltered Housing

- 3.3 Sheltered housing accounts for the majority of supported housing in Rochford. There are 1159 units of sheltered housing in the Rochford district. The eligible Supporting People costs of a number of schemes will be incorporated in the Supporting People Grant. Rochford is unique in that it has a significant number of leasehold sheltered accommodation units.

Supported Housing

- 3.4 Although there are only 33 units of non sheltered supported accommodation in Rochford, the provision is diverse both in terms of who provides the support and to whom. Advance, Cygnet, Estuary, the Ling Trust, John Grooms and NACRO provide support to people who have mental health problems, learning disabilities,

drug and alcohol problems, single homeless people, people with physical and sensory disability and parents with young children.

Floating Support

- 3.5 There are two floating support projects operating in the Rochford District. New Essex Housing Association can provide support to 9 tenants who have support needs in Council and Housing Association accommodation. Secondly, there is the four bedspace Parent & Child scheme provided in partnership with NACRO.

Supply of Supported Housing Services not linked to properties

- 3.6 Rochford has a home improvement agency that aims to provide a home improvement service to help older people and disabled homeowners who require advice and assistance with adaptations and/or repairs carried out to their homes. The Springboard Home Improvement Service receives around 100 enquiries throughout the year. The complementary volunteer run Age Concern Rochford Home Support service receives 350 enquiries and provides gardening and minor repair/job services.

Residential Accommodation

- 3.7 Estuary Housing Association provides 18 units of accommodation in a residential environment for people with learning difficulties. The cost of providing counselling and support will be included in the Supporting People Grant.

4. SERVICE USER STATEMENTS

- 4.1 Needs mapping is still continuing and assessments of need for some client groups remains incomplete at this stage. However, it is anticipated that key providers will steadily fill in the knowledge gaps over the coming months.
- 4.2 The Council commissioned a wide-ranging and district-wide housing needs study in 1999 and the principal findings from this and a more recent Frail Elderly Study have been incorporated in this position statement.
- 4.3 This section of the position statement endeavours to outline current knowledge with regard to local service provision and local need for the following client groups:-
- (a) Older people with support needs
 - (b) People with mental health problems
 - (c) People with learning disabilities
 - (d) People with physical or sensory disability
 - (e) People with drug and alcohol related problems
 - (f) Offenders or people at risk of offending
 - (g) Young people at risk or leaving care
 - (h) Women at risk of domestic violence
 - (i) People with HIV/AIDS
 - (j) Single homeless people with support needs
 - (k) Homeless families with support needs
 - (l) Refugees

(a) OLDER PEOPLE WITH SUPPORT NEEDS

Older people (usually aged over 55) who are physically disabled/frail, older people who are mentally frail or have mental health problems and older people with dementia

Local provision

There are 1159 sheltered housing units of accommodation for older people provided by 10 different providers. Namely:

Abbeyfield Barling & Wakering Society	10
Almshouses	6
Estuary	20
Guardian	43 (Leasehold)
Housing 21	38
Peveral	152 (Leasehold)
Rochford District Council	501
Sanctuary	27
Shaftesbury	38 (30 units comprising Leasehold)
Springboard	324 (124 units comprising Leasehold)

Private (leasehold) units of accommodation number 349 in Rochford. It is important this tenure is mapped because those residents on Income Support may be entitled to financial assistance through Income Support Housing Costs, towards the charge for any eligible support charges. Nationally, it is estimated there are 5,000 people in private leasehold accommodation who receive benefit to meet support costs. The Council and the local Benefits Agency (Department of Work & Pensions) have jointly written to all private leasehold providers encouraging appropriate claims.

A survey of tenants living in Council sheltered accommodation undertaken in February 2000, showed the average age was just over 80 years, with 72.2% of that population aged 75 and above. The research also identified that half of sheltered housing tenants

were totally independent, compared to just under 12% who were assessed as having “high dependency” on support services.

Local need

The 1999 Housing Needs Study projected an 81% increase up to 2,200 people in the 80 years plus population.

Five households were found to be unintentionally homeless and in priority need due to old age during 2001/2.

The home improvement agency managed by Springboard Housing Association and part funded by the Council and Social Services, receives around 100 enquiries a year mostly from older people. The council awarded 20 private sector renovation grants totalling £60,000 during 2001/02. The Age Concern Home Support Service receives 350 enquiries annually, the majority from older people.

At 1st April 2001, the Council’s housing register contained 64 households requiring specialised dwellings that include housing for older people.

The Council’s recently commissioned Frail Elderly Needs Survey, found that whilst Rochford appears to have a good supply of sheltered housing for rent and sale, the distribution of accommodation does not match the need. For example only 10% of the elderly population lives in Rochford town but it has one third of the housing designed for older people. The report also identifies high levels of people in hospital awaiting discharge, low levels of domiciliary care and other low level preventative services.

The Study concludes that ordinary sheltered housing as a matter of policy is not being made available to more disabled older people and the Council has an outdated model of sheltered housing. The report recommends changes to the lettings policy, enhanced staffing and facilities, based in a network of sheltered schemes, geared to provide services to a proportion of much frailer or disabled residents. The Council has retained the services of the consultants who undertook the survey in order to develop with key stakeholders a strategy for older persons in Rochford.

(b) PEOPLE WITH MENTAL HEALTH PROBLEMS

People with enduring but relatively low level mental illness or disability, as well as those who have been diagnosed as mentally ill and who have had, or are having, specialist treatment

Local provision

There are 12 supported housing bed spaces in Rochford for people with mental health problems comprising:

- 2 bed spaces – floating support scheme in partnership with New Essex Housing Association
- 3 bed spaces – Estuary Housing Association
- 3 bed spaces – Advance Housing Society
- 4 bed spaces – Ling Trust

The Council also has nomination rights for 1 bed space in a scheme in Southend run by East Thames Care/Richmond Fellowship

Local need

The local authority accepted a duty to secure accommodation to 4 homeless households where a member was vulnerable due to mental ill health or learning difficulty during 2001/2.

(c) PEOPLE WITH LEARNING DIFFICULTIES

People with mild to moderate learning difficulties as well as those with more severe learning disabilities and/or challenging behaviour

Local provision

There are 5 supported housing bed spaces in Rochford for people with learning difficulties, solely managed by Cygnet with care provided by Pentahact. Cygnet manages the tenancy of a four bedroom house occupied by three tenants and a resident carer. Two further tenants are living in one bedroom self contained flats. Currently, two private landlords provide support to this client group.

The Salvation Army Hadleigh Training Centre also provides a valuable support services to people with learning difficulties from Rochford. The centre aims to provide a training programme which will aid clients with special needs to enhance their personal development, and maximise their potential to enter mainstream training and/or employment.

Local need

The local authority accepted a duty to secure accommodation to 4 homeless households in 2000/01 where a member is vulnerable due to mental ill health or learning difficulty.

The Learning Disability Joint Investment Plan 2001-2004 identifies eight people with learning difficulties under the age of eighteen that will need housing with support in Rochford per year. It estimates a further five people aged 18 or over will require housing with support in 2001/2. The locality action plan for Rochford has an aim to “increase the range of housing with support options to meet the local need”.

(d) PEOPLE WITH PHYSICAL OR SENSORY DISABILITY

People with mobility difficulties, sensory impairments and debilitating or long term illness

Local provision

John Grooms Housing Association provide six, two bedroom properties and two, three bedroom houses in Millview Meadows, Rochford. Tenants receive support usually via Social Services or the Independent Living Fund.

Local need

Homelessness statistics show, as at 31st March 2001 there were 5 households requiring specialised dwellings including people with a physical or sensory disability.

At 1st April 2001, the council's housing register contained 64 households requiring specialised dwellings including people with a physical or sensory disability.

(e) PEOPLE WITH DRUG & ALCOHOL PROBLEMS

People with drug & alcohol problems who are homeless or who are having difficulties in relation to sustaining their accommodation or managing to live independently

Local provision

There are 2 bed spaces specifically allocated for people with drug and alcohol problems in Rochford under the floating support scheme.

Local need

The Roche Unit is a drug and alcohol advice and treatment service. A team of doctors, nurses, social workers, criminal justice workers and support staff provide help to people stop using substances and to reduce harm associated with use.

Young people who have drug problems may also access Southend Young People's Substance Misuse Project – an information advice and support service for young people.

A Drug Referral Scheme has been set up at Southend Night Shelter that involves certain known drug users being given the opportunity of an interview with the Southend & Rayleigh Drug Arrest Referral Team. This scheme will be an integrated service combining the services of Southend Arrest Referral Scheme, Southend Young Person's Substance Misuse Project, 185 Project and the Needle Exchange Service.

The Southend & Rayleigh Drug Arrest Referral Scheme has confirmed that there are currently five drug offenders from the Rochford, Rayleigh and Castle Point areas on a Drug Testing and Treatment Order. Such orders are a minimum of one year, reviewed monthly by the Magistrates and offenders have access to a range of support including advice and counselling from the Probation Officer and the Drug Counselling Service. Offenders are seen at least five working days over a 13 week period. A range of drug and alcohol advice services will also be provided at the Coombewood Centre being developed in Rayleigh.

(f) OFFENDERS OR PEOPLE AT RISK OF OFFENDING

Offenders or people at risk of offending who are homeless or who are having difficulties in relation to sustaining their accommodation or managing to live independently

Further needs assessment has still to be undertaken with data provided by relevant agencies.

(g) YOUNG PEOPLE AT RISK OR LEAVING CARE IN ROCHFORD

Homeless young people (under 21) and those in insecure accommodation, young single parents needing support and vulnerable young women in this age group who are pregnant. Also those leaving local authority care who need support

Local provision

The Council in partnership with Swan provides a four bed space "Parent & Child Unit". There are also 2 bed spaces dedicated for young people in Rochford under the floating support scheme.

Local need

The local authority accepted a duty to secure accommodation to 27 homeless lone parents all of whom were under the age of 25 during 2000/1. As of 31st March 2001, the Council was accommodating 20 lone parent households. Nine families were housed in Council accommodation, four families in hostels, four in bed & breakfast accommodation and three families in other types of housing.

The local authority's homelessness statistics also show during 2000/1, there were three households where a member of the household was pregnant and there were no other dependent children.

The Rochford based Leaving & After Care Social Services Team estimate from their previous year's data that there is the need for between 4 – 6 places at the Parent & Child unit in the Rochford district annually.

Rochford is fortunate not only to have the Social Services Leaving & After Care team based in Rochford Square, but also a centrally located meeting house which young people leaving care are encouraged to use and meet.

Rochford also has an Information Station for Young People that is run by a team of youth workers who offer support and information to people under twenty. A variety of services are offered for young people and Youth Workers undertake outreach work.

Youth Workers may also attended a NACRO interview with young people to assist with their housing application.

Social Services estimate that there have been between 4- 6 cases during 2001/2 that would have benefited from supported housing. For young people who have lived in Rochford for a number of years who would like to access supported housing offered by NACRO, as a transition to attaining full independence, there is little they can do but wait for a vacancy.

(h) WOMEN AT RISK OF DOMESTIC VIOLENCE IN ROCHFORD

Women at risk of domestic violence who have left their home or who are having difficulties in keeping their home and establishing their personal safety.

Local provision

Rochford does not have any refuge provision in its District and relies upon out of area vacancies.

Local need

There are currently seven refugees in Essex managed by Women's Aid. Their 2000/1 statistics show they assisted 565 families across Essex, six households being able to access this supported accommodation from Rochford. For people escaping domestic violence in Rochford, Southend Women's Refuge is typically used.

The Council's homelessness statistics 2000/1 show relationship breakdowns that involved a violent partner accounted for the main reason of homelessness in six cases, all of whom were female lone parents. However, there were 460 incidents of domestic violence from the Rochford area reported to the Rayleigh Police in 2000.

The Dove Project's "Safe Haven East's Helpline" received 21 enquiries from people in the Rochford district.

However, the Council:

- Is involved with the local Domestic Violence Partnership Group

- financially supports the Essex Women's Refuge (Aid) Association – made up of seven refuges that operate an “open door policy”
- funds an Assistant Community Safety Officer dealing specifically with domestic violence issues
- has recently run an awareness campaign
- produced an Information Pack for victims of domestic violence
- supplies mobile phones for victims of domestic violence
- in conjunction with Castle Point Borough Council and Essex County Council, run an education programme for secondary schools
- has run domestic violence awareness training for housing department staff
- participates in the Essex Housing Officers Group research in conducting a needs mapping exercise of Women's Refuges on a countywide basis

The Rochford Housing Strategy notes the need for a specific facility for victims of domestic violence within the District. In partnership with Swan Housing Association, new “move-on” accommodation was proposed in Tendring Avenue, Rayleigh and a bid was made to the Housing Corporation. The proposed new build 6 unit scheme aimed to provide temporary, safe and secure supported accommodation and to enhance community safety through a reduction in repeat domestic victimisation. The Council and the local Domestic Violence Partnership Group fully endorsed the proposal. Unfortunately at the time of writing this report no Corporation funding has been given but the Council is continuing to pursue funding for the scheme.

Domestic Violence is an area highlighted within the Rochford Crime & Disorder Reduction Strategy under Primary Objective 5.

Women escaping domestic violence in Rochford have access to the advice and counselling services of the Assistant Community Safety Officer at the Council. Also, the Council's housing advisory service and Citizen's Advice Bureau.

(i) PEOPLE WITH HIV/AIDS

Local provision

The mapping survey to date, has not identified any specialist accommodation for people with HIV/AIDS. However, there are the following local support services for people with HIV/AIDS:

Genito-Urinary Medicine Department, Southend Hospital

Family planning, Southend Health Centre

HIV & AIDS Care Services, Southend Hospital

Southend AIDS Organisation

Needle Exchange

Roche Unit

“185” Young people’s information, advice & support service

Health Promotion Service, South Essex Health Authority

(j) SINGLE HOMELESS WITH SUPPORT NEEDS IN ROCHFORD

People who have been accepted as homeless and in priority need and also those single homeless people who have been turned down for re-housing or have not approached the local authority

Local provision

The local authority has 382 one-bedroom properties in its housing stock, some of which may be allocated to single homeless people who require support, according to need. Typically, nineteen one-bedroom properties become available to re-let each year.

NACRO Housing Association provides support to six single people with support needs.

Local need

Four single people, under the age of 25 and vulnerable due to mental ill health or a learning difficulty were accommodated by the Council in 2001/2.

As of 31st March 2001, there were eight one-person households being accommodated by the local authority under homeless provisions. Five people were in hostels, two in Bed & Breakfast accommodation and one person in Council accommodation.

Southend Night Shelter's accommodation statistics show that of the 2,977 bed spaces used during 2000/1, 4% or 119 people gave their last address from the Rochford area.

Single homeless people with support needs have a wide ranging support network that reflects the diverse needs of this client group. For example, NACRO, Southend Centre for the Homeless, YMCA Southend, Southend Night Shelter, Rochford District Council's housing advisory service and Rochford Citizen's Advice Bureau.

The Homelessness Act has recently received Royal Assent and requires local authorities to develop a homelessness strategy by mid 2003 and the needs of single homeless people will be further highlighted in that report.

(k) HOMELESS FAMILIES WITH SUPPORT NEEDS

Only those families with support needs who have been accepted as statutorily homeless and are placed in temporary accommodation. This group includes vulnerable homeless women with children

Local provision

The local authority has a 10 bedspace hostel for homeless families but there is no housing related support provided that accompanies such temporary housing. It also allocates 19 units of accommodation from the Council's own housing stock.

These too, will be covered by the proposed homelessness strategy.

Local need

The local authority accepted a duty to secure accommodation for 7 couples with dependent children during 2000/1. Three of those families had one child, the remaining four had two dependent children. Their reason for becoming homeless are recorded as:

4 families lost their rented or tied accommodation

1 parental eviction

- 1 mortgage arrears repossession
- 1 private rented arrears

As of 31st March 2001, the Council was accommodating eight couples with dependent children by means of:

- 2 households in private sector accommodation leased by housing associations
- 3 households in Council properties
- 1 household in a hostel
- 2 households in bed & breakfast

The average length of stay for homeless households in bed & breakfast accommodation during 2000 was 8 weeks.

(I) REFUGEES

Only those who have been officially accepted as refugees and not the wider group of those seeking asylum

Local provision

There is no supported housing in the Rochford area for refugees.

5. CAPITAL EXPENDITURE PRIORITIES

- 5.1 In respect of the bids for 2002/3, the Housing Corporation has not allowed any resources to Rochford at this time but negotiations are continuing with the Housing Corporation in respect of approving possible bids.

6. CONCLUSIONS

6.1 The principal issues that have become evident in preparing this initial position statement are:-

- Large provision of sheltered housing
- Lack of specialist supported housing and/or support services
- Lack of suitable local temporary accommodation
- Lack of move-on permanent accommodation
- Need to accommodate people outside the District
- Some services are provided outside the District
- Lack of evidence of need for some client groups
- Lack of awareness of services by potential service users

6.2 The lack of supported housing and/or support services in the Rochford area (particularly short-term accommodation such as a refuge for victims of domestic violence) has the following implications:

- For clients requiring some support services there is often no choice but to move out of area
- Increasing use of existing Council housing stock as temporary accommodation for homeless households
- Increasing importance of “in-District” support groups
- Some people do not receive the support they need

6.3 Resources are fundamental to the successful implementation of the Supporting People programme in the Rochford area. The principal issues that have been identified are as follows:-

- Land: there are general constraints on new housing development and very few sites remaining in Council ownership

- Housing stock: a very high level of home ownership around 90% and an extremely small and declining social housing sector (RSL new development and acquisitions continuing to be outweighed by Right To Buy sales of Council housing)
- Finance: historically low Housing Investment Programme and Approved Development Programme allocations

6.4 The principal areas for further development as the local Supporting People Strategy evolves are as follows:-

- A more comprehensive assessment of the need for supported housing and/or support services for all client groups
- Increased resources for the provision of supported housing and/or support services
- An innovative approach to the provision of supported housing and/or support services maximising the opportunities presented by the Transitional Housing Benefit Scheme and Supporting People Grant
- Further development of partnership working between all appropriate statutory, non-statutory and voluntary sector organisations and agencies

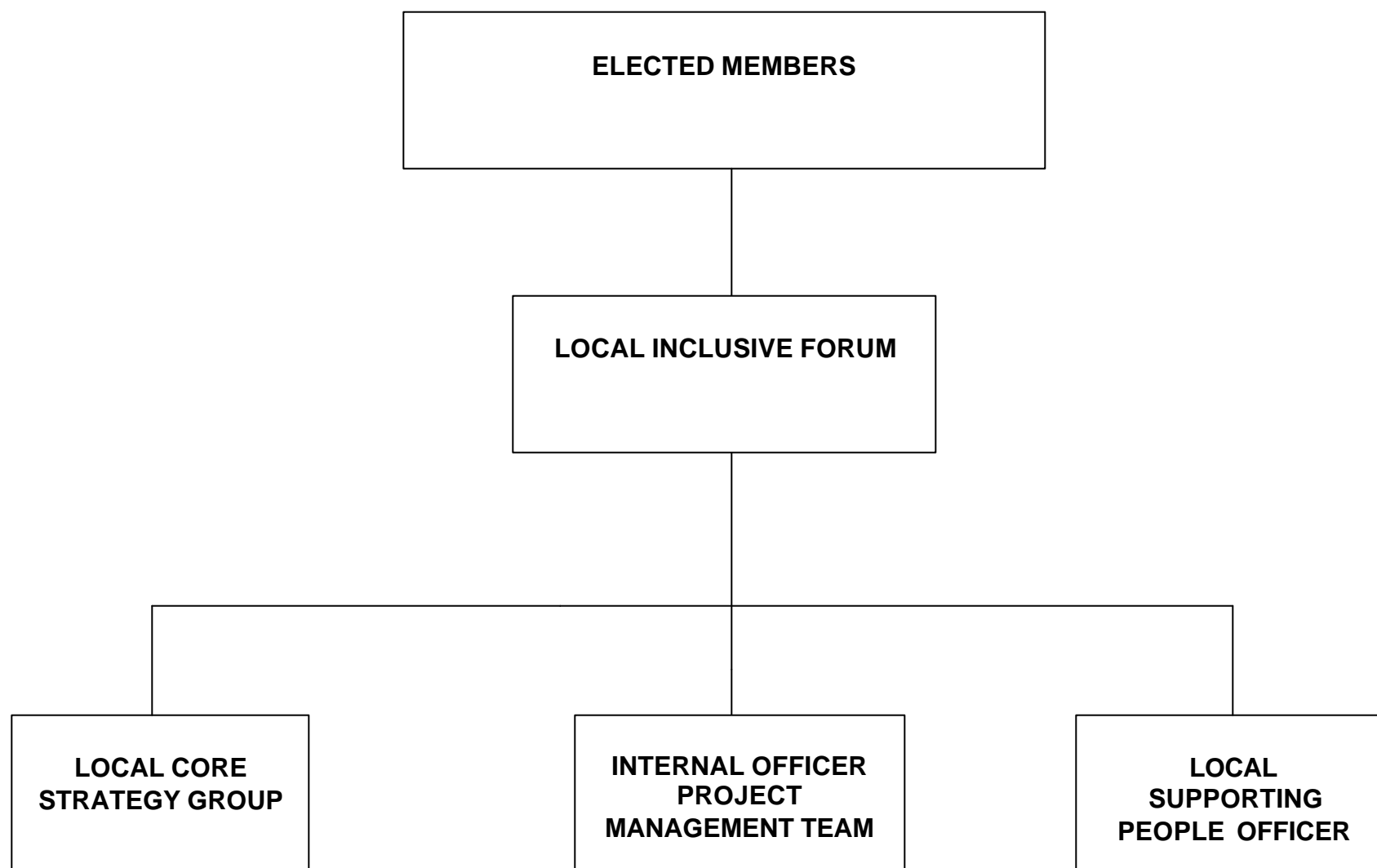
7. APPENDICES

- i. Rochford Supporting People Action Plan
- ii. Supporting People policy making arrangements in Rochford
- iii. Decision Making bodies for Supporting People in Essex
- iv. Tables of Supply Mapping

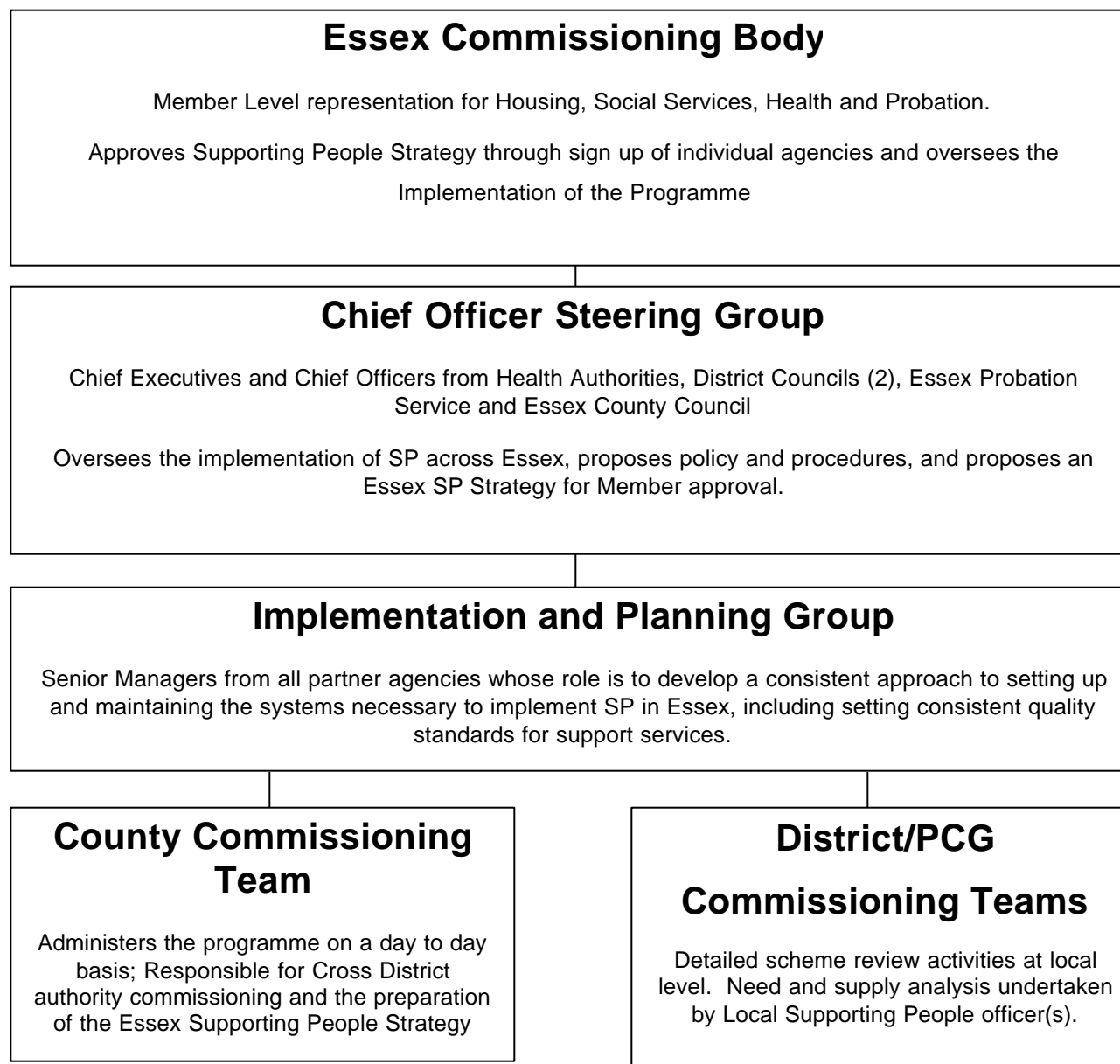
i. ROCHFORD SUPPORTING PEOPLE ACTION PLAN - Position as at February 2002

			2001								2002												2003		
	Task	Completion Date	June	July	August	September	October	November	December	January	February	March	April	May	June	July	August	September	October	November	December	January	February	March	
1	Appoint lead officer for Supporting People and provide details to DTLR	Completed	●	●	●																				
2	Visit existing schemes to familiarise with sector	Completed			●	●																			
3	Develop overall project plan for the implementation of Supporting People (up to April 2003)	Completed			●	●																			
4	Establish links with health organisations, Probation Service and relevant Local Authority departments	Completed			●	●	●																		
5	Map links to other local strategies and identify areas of joint interest	Completed			●	●	●																		
6	Establish links with commissioning managers in Social Services, Health and Probation Service	March 2002								●	●	●													
7	Obtain information on supply of services from local and national sources	March 2002			●	●	●	●	●	●	●	●													
8	Assess current knowledge of needs and develop options for achieving a comprehensive analysis	June 2002						●	●	●	●	●	●	●	●										
9	Agree how and when to involve elected Members	February 2002									●														
10	Set up Inclusive Forum	Completed				●	●																		
11	Set up Core Strategy Group	Completed				●	●																		
12	Set up internal Project Management Team	Completed				●	●																		
13	Implementation funding arrangements	Completed				●	●																		
14	DTLR milestones	Quarterly		●			●			●															
15	Maximizing THB including Leaseholder's	Completed				●	●	●	●	●	●	●	●	●	●	●	●	●	●	●	●	●	●		
16	Staff briefings	Completed					●																		
17	Member update briefings	Ongoing									●	●													
18	Develop comprehensive map of local supply	June 2002				●	●	●	●	●	●	●	●	●	●										
19	Develop local service aims for each client group	Ongoing					●	●	●	●	●	●	●	●	●	●	●	●	●	●	●	●	●		
20	Produce initial position statement based on needs and supply analysis	February 2002						●	●	●	●														
21	Carry out full needs survey	Awaiting guidance																							
22	Set up arrangements for reviewing schemes	March 2003																				●	●		
23	Plan first round of scheme reviews	March 2003																				●	●		
24	Plan communication strategy for sheltered and other home for life tenants	Awaiting guidance on means testing																							
25	Support for RSL development/acquisition programmes	Ongoing				●	●	●	●	●	●	●	●	●	●	●	●	●	●	●	●	●	●		
26	Interim contract stage	September 2002													●	●	●	●							

ii. SUPPORTING PEOPLE POLICY MAKING ARRANGEMENTS IN ROCHFORD



iii. Decision making bodies for Supporting People in Essex



iv. TABLES OF SUPPLY MAPPING

The overview of the supply of supported housing sets out the extent that services are linked to units of accommodation. The table below shows these figures by client groups and types of providers:

	LSVT	Non-RSL Managing Agent	RSL Direct Managed Service	RSL as a Managing Agent	Local Authority (Housing)	Local Authority (Social Services)	NHS Provider	Registered Charity	Voluntary Sector	Private Sector	Private Individual	Other	TOTAL
Accommodation type exists in area	N	N	Y	Y	Y	N	N	Y	N	Y	Y	N	
Older people with support needs	0	0	293	0	501	0	0	16	0	349	0	0	1159
People with mental health problems	0	0	0	12	0	0	0	0	0	0	0	0	12
People with learning difficulties	0	0	0	5	0	0	0	0	0	0	2	0	7
People with physical or sensory disabilities	0	0	0	8	0	0	0	0	0	0	0	0	8
Single homeless people with support needs	0	0	0	6	0	0	0	0	0	0	0	0	6
People with alcohol related problems	0	0	0	1	0	0	0	0	0	0	0	0	1

	LSVT	Non-RSL Managing Agent	RSL Direct Managed Service	RSL as a Managing Agent	Local Authority (Housing)	Local Authority (Social Services)	NHS Provider	Registered Charity	Voluntary Sector	Private Sector	Private Individual	Other	TOTAL
People with drug related problems	0	0	0	1	0	0	0	0	0	0	0	0	1
Offenders or people at risk of offending	0	0	0	0	0	0	0	0	0	0	0	0	0
Young people at risk or leaving care	0	0	0	6	0	0	0	0	0	0	0	0	6
Women at risk of domestic violence	0	0	0	0	0	0	0	0	0	0	0	0	0
People with HIV/AIDS	0	0	0	0	0	0	0	0	0	0	0	0	0
Homeless families with support needs	0	0	0	0	29	0	0	0	0	0	0	0	29
Refugees	0	0	0	0	0	0	0	0	0	0	0	0	0
TOTAL	0	0	293	45	530	0	0	16	0	349	2	0	1229