
ROCHFORD LOCAL STRATEGIC PARTNERSHIP

1 SUMMARY

- 1.1 This report provides Members with an update of the Rochford Local Strategic Partnership (LSP) since they last attended the Committee on 7 December 2010.

2 INTRODUCTION

- 2.1 A Local Strategic Partnership is a non-statutory multi-agency partnership which brings together, at a local level, the different parts of the private, public, community and voluntary sectors. The duty of the LSP is to prepare and implement a single co-ordinated framework of its long term vision for the District, as set out in the Sustainable Communities Strategy (SCS). Its vision: “Working in partnership to make our District a place which provides opportunities for the best possible quality of life for all who live, work and visit here”. This vision is the same as that of the District Council. The objective of the SCS and for the LSP is to improve the economic, social and environmental well being of the local area.
- 2.2 Until recently, the LSP was made up of an Executive Board underpinned by thematic partnerships that supported the delivery of the identified priorities in the SCS. The Executive Board had representatives from both public and voluntary sector partners, including Rochford District Council, Essex County Council, Essex Police, National Health Service South East Essex, the voluntary and community sector, the local business community, local Registered Social Landlords and each of the Chairs of the thematic partnerships.

3 UPDATE SINCE DECEMBER 2010

- 3.1 Since the last report into this Committee, the Rochford LSP has agreed to merge with the Castle Point LSP and a Joint LSP across the two authorities has now been established. This will enable there to be a rationalisation and consolidation of the thematic partnership structures below the LSP (Appendix One) and has also resulted in a revised Board membership (Appendix two), The Joint LSP has agreed to meet four times per annum, endorsed the election of a Chairman, Cllr Pam Challis, and Vice Chairman, Cllr Terry Cutmore (annual term). The Chief Executives of Castle Point and Rochford are now developing a single Governance arrangement to cover the Joint LSP.
- 3.2 The Joint LSP builds on the shared partnership arrangements already in place and reflects the changing context of partnership working, with reduced and evolving funding streams, changing legislation and changing organisational structures. A Joint LSP should ensure that both Rochford and Castle Point are well placed to take advantage of emerging revised partnership arrangements county-wide and developing initiatives such as community budgeting and the “Big Society”.

- 3.3 An example of the work the Joint LSP is now increasingly focussed on is the work being undertaken under the community budgeting initiative. Essex was identified as one of 16 areas nationally to pilot Community Based Budgeting, with a focus on families with complex needs. Rochford and Castle Point are one of the areas within Essex chosen for work on this pilot, along with Basildon, Harlow, Tendring and Colchester. The Joint LSP is overseeing this work locally, which is looking at the referral routes to services for frequent service users, to identify duplication in processes and to recommend alternative approaches. The local project is progressing and will be reported into the next Joint LSP meeting scheduled for 17 June.

4 RISK IMPLICATIONS

- 4.1 At a time of limited resources, it is vital that the council continues to engage effectively in key partnerships. The effectiveness of the newly created Joint LSP is an operational and reputational risk to the Council. If the Joint LSP and the partnerships around it perform well, that is likely to have a positive impact on the work of the Council.

5 RESOURCE IMPLICATIONS

- 5.1 At the moment the LSP funds the two dedicated LSP officers through the previously awarded PRG allocation, this funding and both posts will cease on 30 August 2011. In the light of the new joint arrangements, discussions with Castle Point are taking place as to what the staffing resource requirements should be as we move forward
- 5.2 In addition, a range of staff from across the authority will be regularly or periodically involved in the work of the Joint LSP and the partnership arrangements below it.

6 RECOMMENDATION

- 6.1 It is proposed that the Committee **RESOLVES** to note the contents of the report.

Paul Warren

Chief Executive

Background Papers:-

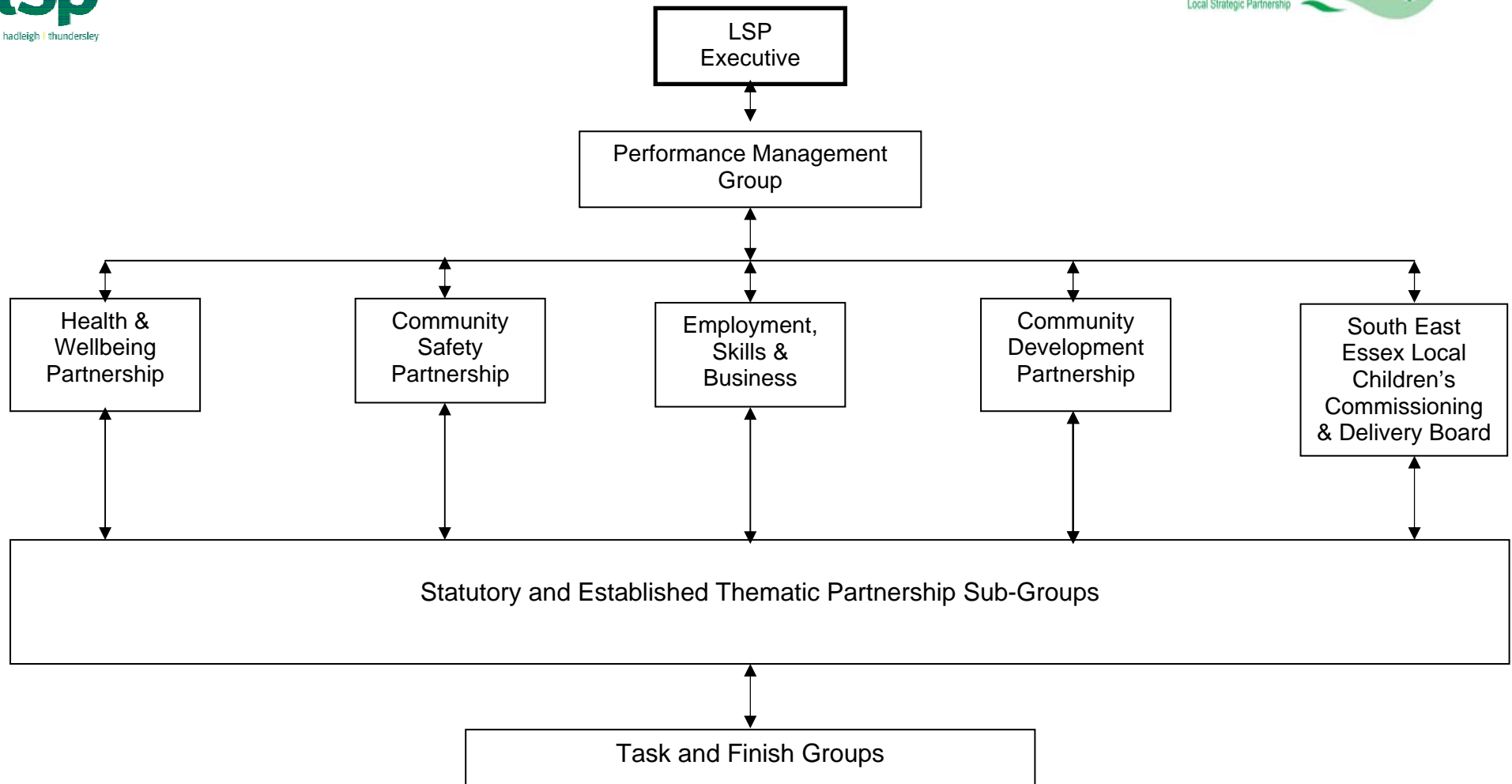
None

For further information please contact Cheryl Milton-White on:-

Phone:- 01702 318167

Email:- cheryl.milton-white@rochford.gov.uk

If you would like this report in large print, Braille or another language please contact 01702 318111.





Proposed Membership

Castle Point Borough Council
Rochford District Council
Essex County Council
Essex Police
SEE PCT
Thames Gateway South Essex Partnership Limited
Essex Fire and Rescue
Voluntary Sector
Registered Social Landlord
Federation of Small Businesses
Chairs of Thematic Partnerships
GP Consortia
Essex Police Authority
Essex Probation
Mental Health Trust
Further Education

*Powers to co-opt when Board deem appropriate